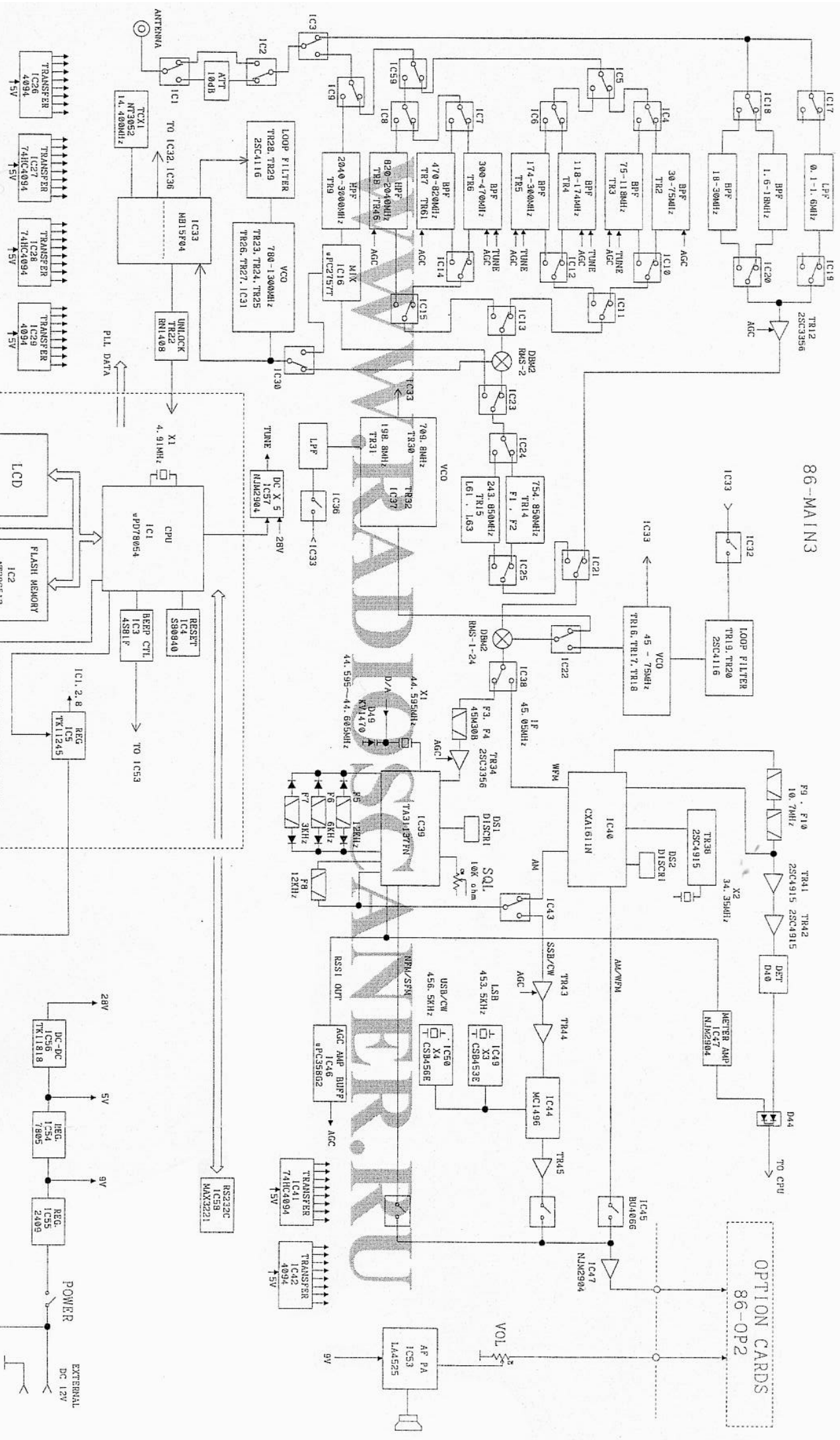


86-MAIN3

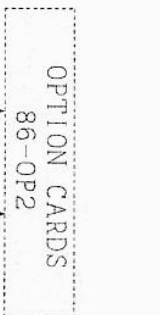


FREQUENCY CONFIGURATION

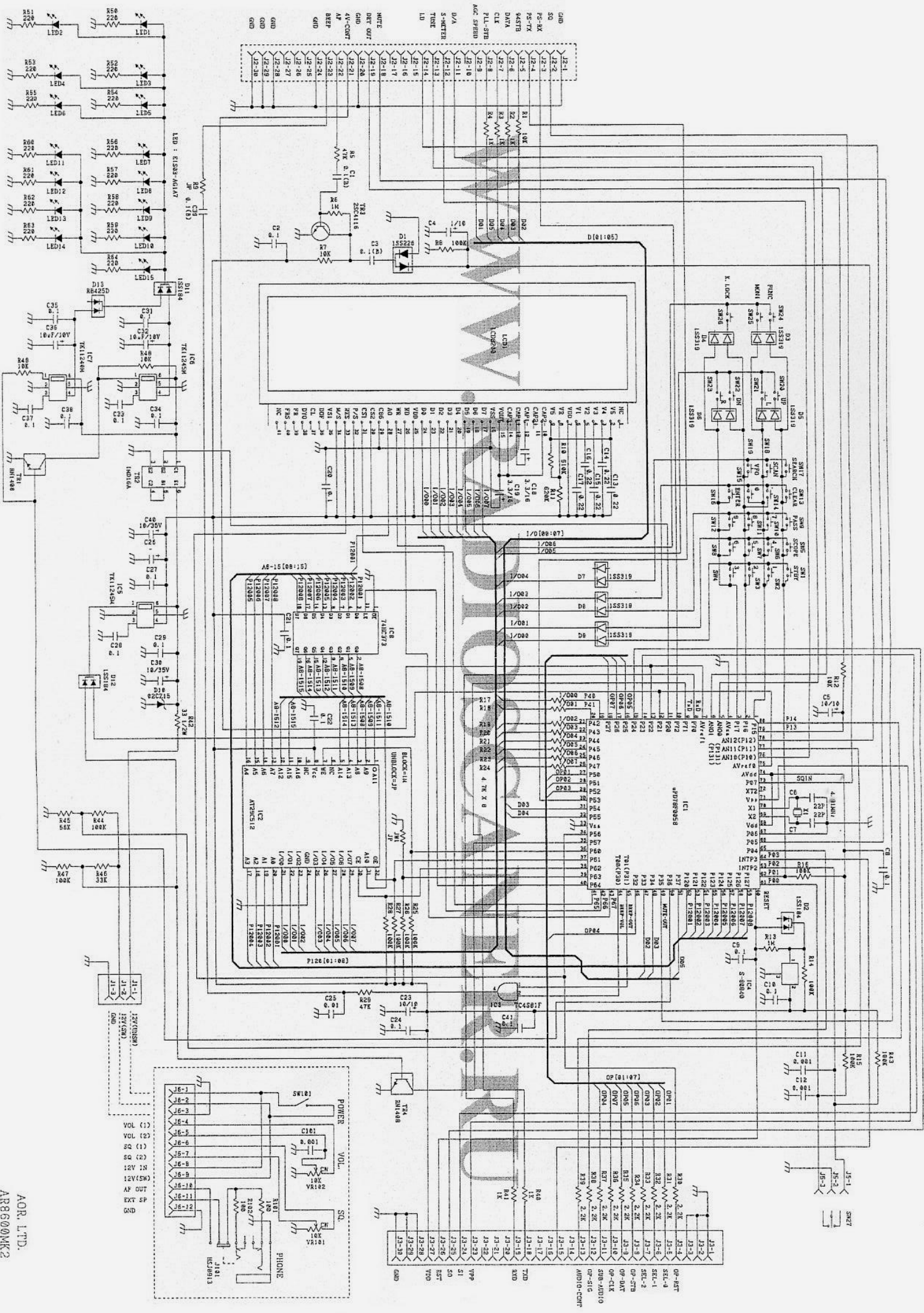
RX FREQ.	1st IF	VCO FREQ.
0.1 - 30MHz	+ 4.5, 05MHz	4.5, 150 - 7.5, 050MHz
30 - 510MHz	+ 7.54, 050MHz	7.94, 950 - 12.94, 050MHz
540 - 1040MHz	+ 24.3, 050MHz	7.93, 950 - 12.93, 050MHz
1040 - 1540MHz	+ 24.3, 050MHz	7.96, 150 - 12.96, 150MHz
1540 - 2040MHz	+ 75.4, 050MHz	7.95, 150 - 12.95, 150MHz
2040 - 2500MHz	+ 24.3, 050MHz	11.96, 150 - 12.96, 150MHz
2500 - 3000MHz	+ 75.4, 050MHz	8.99, 075 - 11.99, 075MHz
		87.2, 075 - 11.92, 075MHz

86-CPU3

IC1	IC2	IC3	IC4	IC5	IC6	IC7	IC8
IC1	AT28C512	IC3	4S81F	REG	TK11245	REG	TK11245
IC2	AT28C512	IC4	S80840	REG	TK11245	REG	TK11245
IC3	AT28C512	IC5	4S81F	REG	TK11245	REG	TK11245
IC4	AT28C512	IC6	S80840	REG	TK11245	REG	TK11245
IC5	AT28C512	IC7	4S81F	REG	TK11245	REG	TK11245
IC6	AT28C512	IC8	S80840	REG	TK11245	REG	TK11245

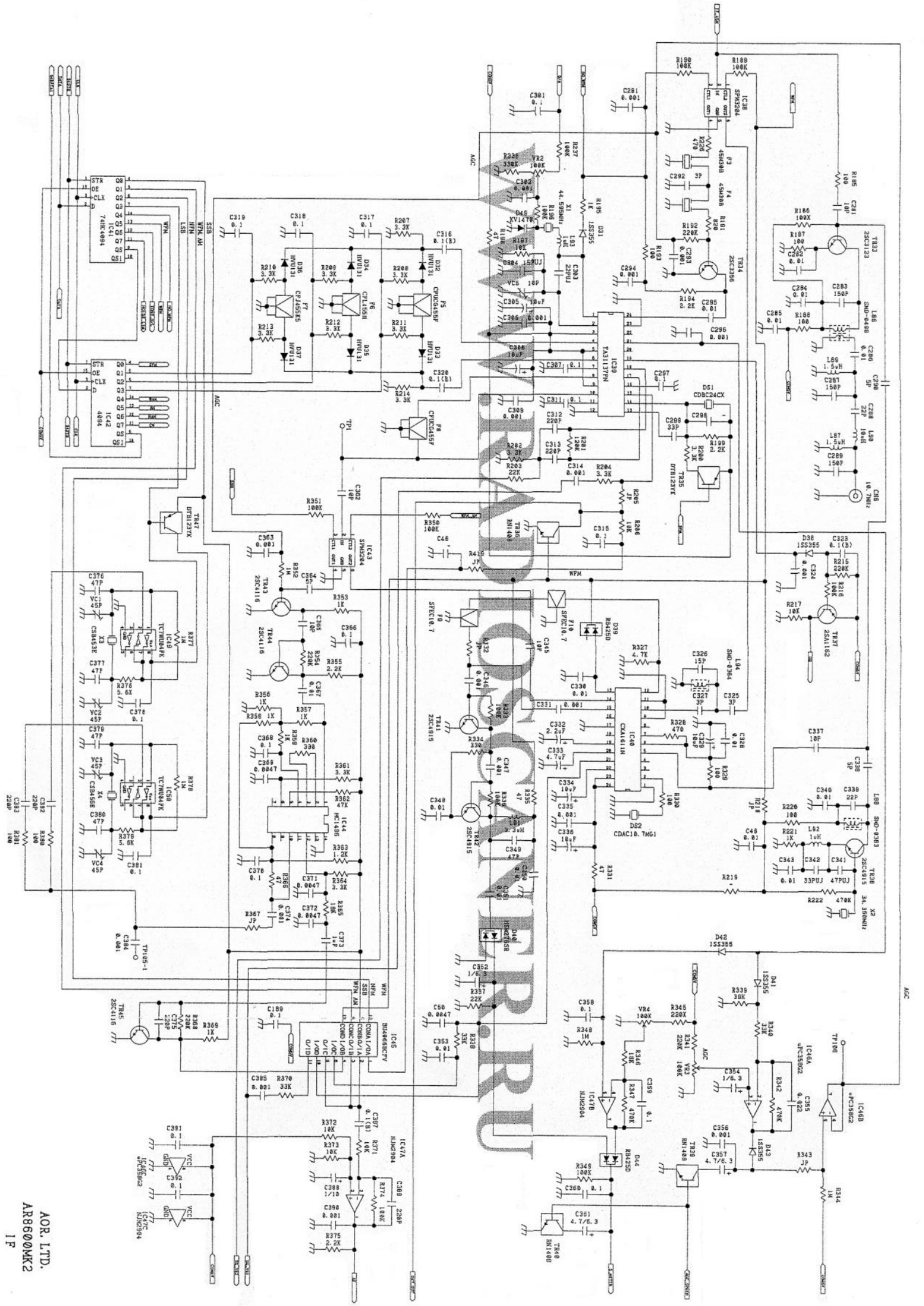


AOR.LTD.
AR6600MK2
BLOCK DIAGRAM

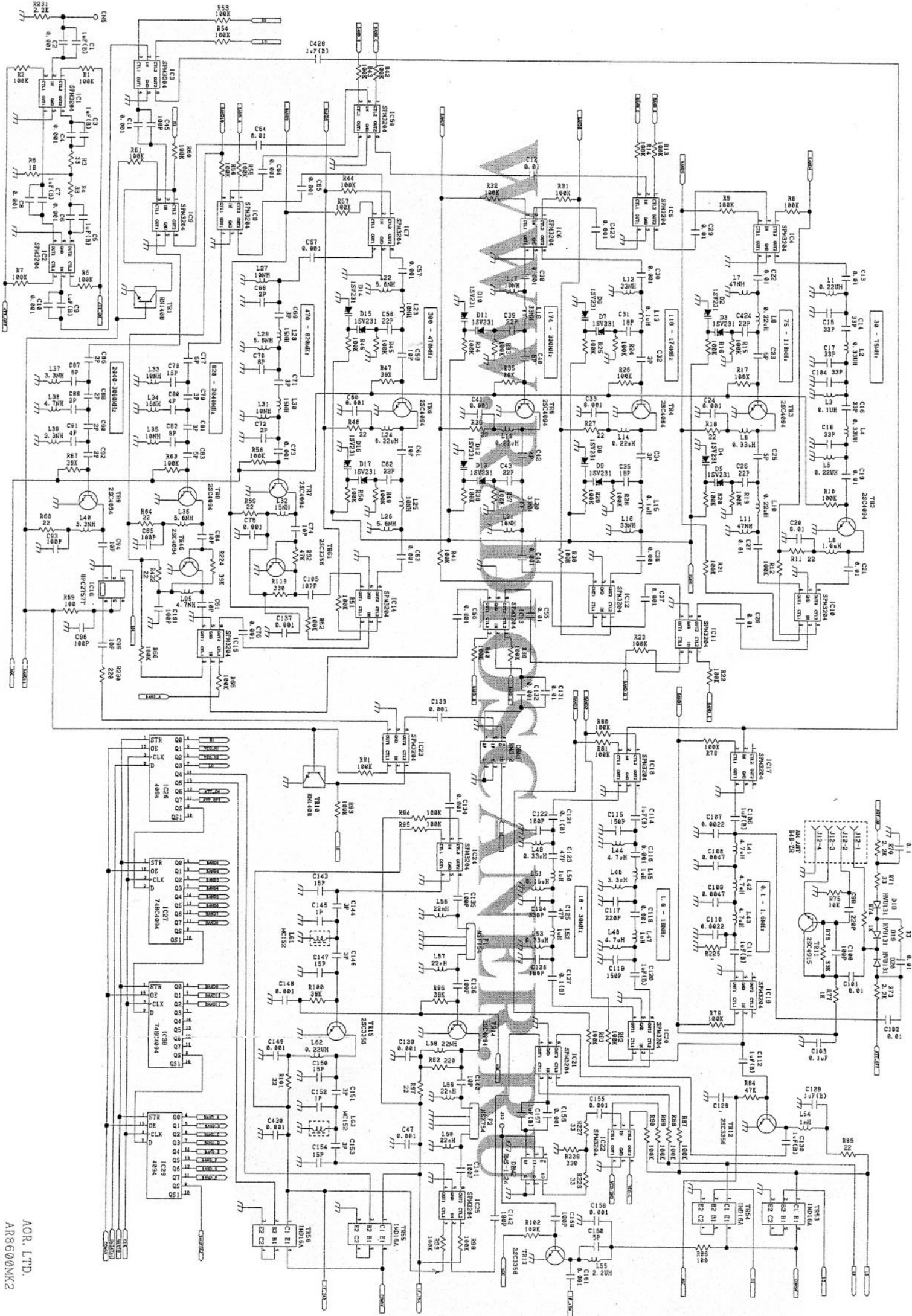


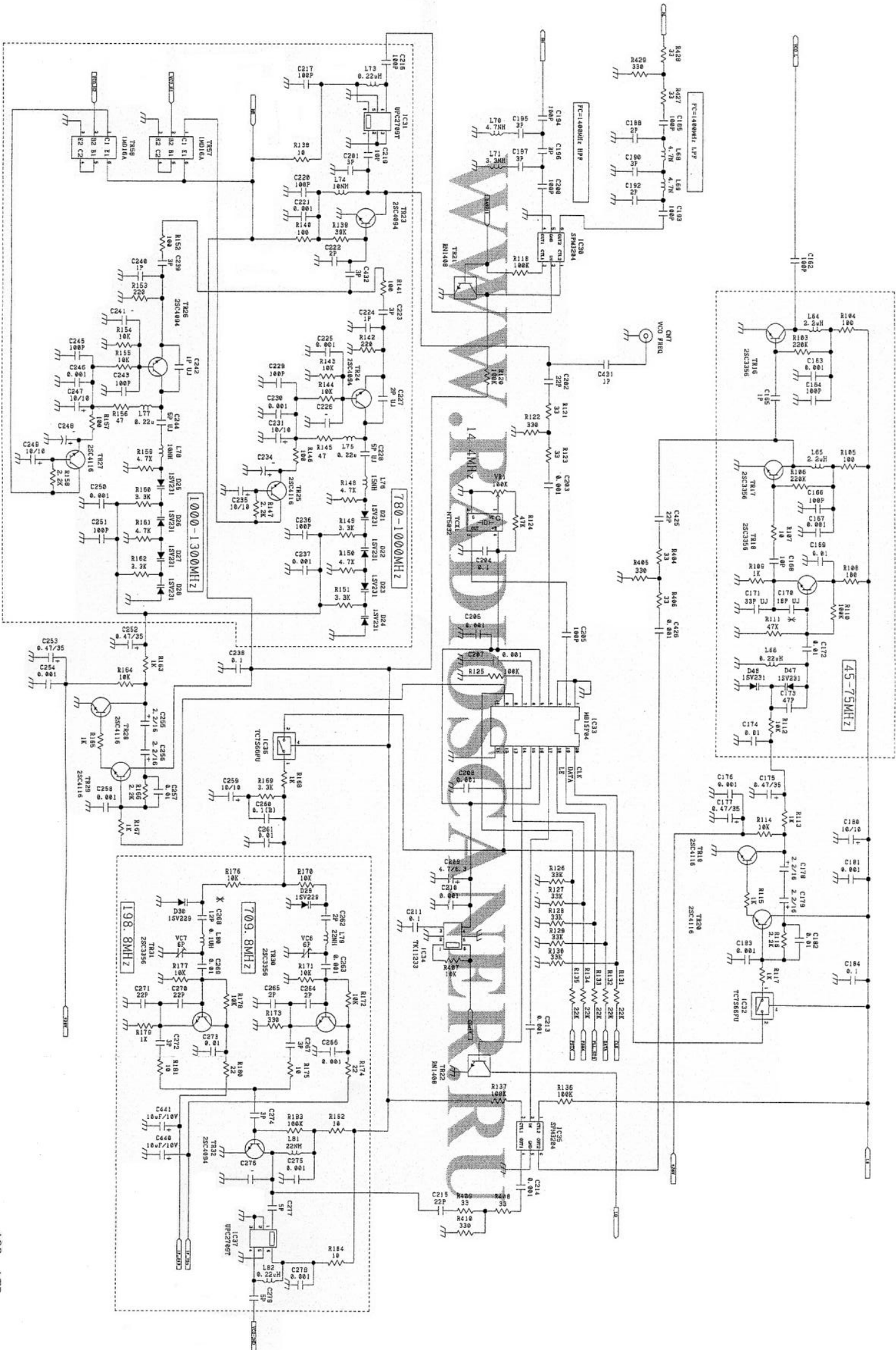
D/A	J2-1
S-HEATER	J2-2
TONE	J2-3
LD	J2-4
A/C SPINDLE	J2-5
P.L.L. STD	J2-6
DATA	J2-7
CLK	J2-8
94579	J2-9
PS-TX	J2-10
PS-RX	J2-11
SO	J2-12
D/D	J2-13
NC	J2-14
NC	J2-15
NC	J2-16
NC	J2-17
NC	J2-18
NC	J2-19
NC	J2-20
NC	J2-21
NC	J2-22
NC	J2-23
NC	J2-24
NC	J2-25
NC	J2-26
NC	J2-27
NC	J2-28
NC	J2-29
NC	J2-30
NC	J2-31
NC	J2-32
NC	J2-33
NC	J2-34
NC	J2-35
NC	J2-36
NC	J2-37
NC	J2-38
NC	J2-39
NC	J2-40
NC	J2-41
NC	J2-42
NC	J2-43
NC	J2-44
NC	J2-45
NC	J2-46
NC	J2-47
NC	J2-48
NC	J2-49
NC	J2-50
NC	J2-51
NC	J2-52
NC	J2-53
NC	J2-54
NC	J2-55
NC	J2-56
NC	J2-57
NC	J2-58
NC	J2-59
NC	J2-60
NC	J2-61
NC	J2-62
NC	J2-63
NC	J2-64
NC	J2-65
NC	J2-66
NC	J2-67
NC	J2-68
NC	J2-69
NC	J2-70
NC	J2-71
NC	J2-72
NC	J2-73
NC	J2-74
NC	J2-75
NC	J2-76
NC	J2-77
NC	J2-78
NC	J2-79
NC	J2-80
NC	J2-81
NC	J2-82
NC	J2-83
NC	J2-84
NC	J2-85
NC	J2-86
NC	J2-87
NC	J2-88
NC	J2-89
NC	J2-90
NC	J2-91
NC	J2-92
NC	J2-93
NC	J2-94
NC	J2-95
NC	J2-96
NC	J2-97
NC	J2-98
NC	J2-99
NC	J2-100

AOR LTD.
AR6600MK2
CPU



AOR, LTD.
AR8600MK2
1P





AOR. LTD.
AR8600MK2
VCO & PLL